

# Roller Shutters Thermo Teck

Galvanized steel profiles, double-skinned



## Text example

Compile and tender according to requirements.  
Please refer to Technical Data below for respective details.  
Updated 01.05.2014



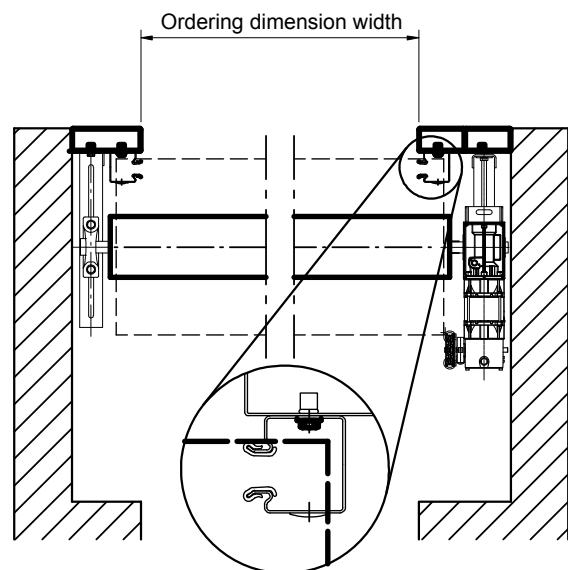
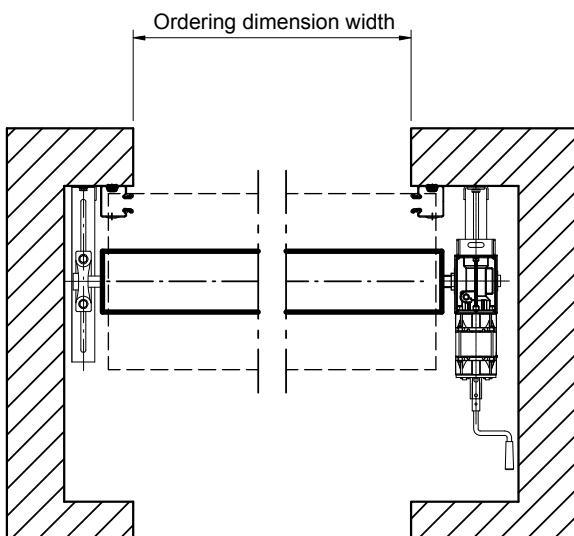
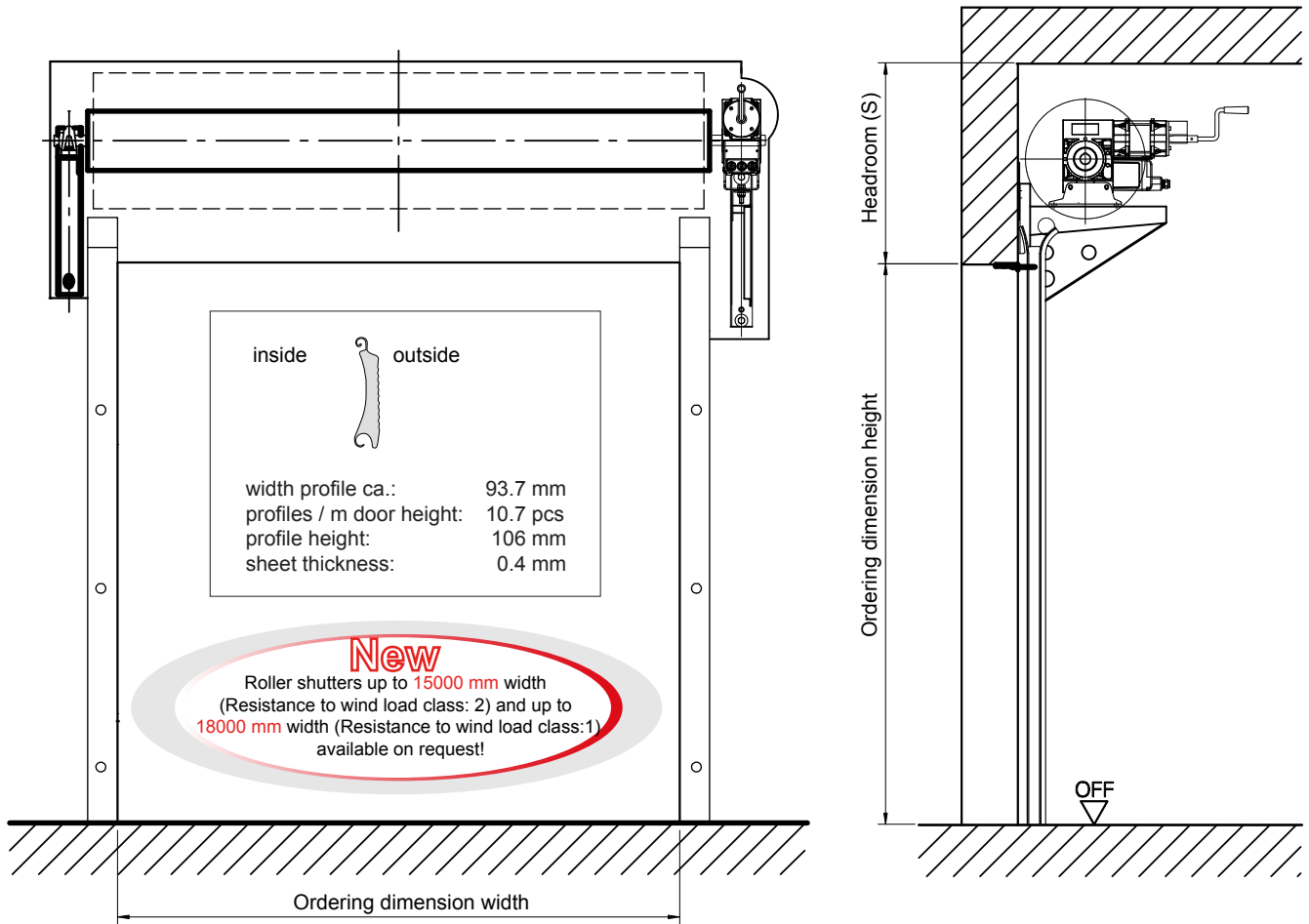
Position	No. Of pieces	Item	Unit price €	Total price €
		Roller shutter, double-skinned, insulated, made of steel profiles, galvanized consoles. Resistance to wind load in accordance with EN 12424 class 2. With header seal and prime coated winding shaft.		
		<b>Make:</b> Teckentrup or equivalent. Roller shutter Thermo Teck, steel, double-skinned. <b>Drive:</b> Direct mount drive 400 V (three-phase voltage), IP54, emergency crank handle, intergr. Anti-drop device, TÜV tested, maintenance-free, 60% ED. <b>Control:</b> Basic version, control voltage 24 V (safety low volt.), degree of protection IP65, "door closed" in deadman mode (permanent pressure), with push buttons "open-stop-close", fully wired ready for use and with CEE plug. <b>Installation:</b> Behind the opening, on concrete, all fastening elements, suitable for structure material, are supplied. <b>Ordering dimensions:</b> Ordering dimensions ___mm wide and ___mm high. Wall and header thickness (concrete ___mm / masonry ___mm), headroom ___mm, sideroom right-hand ___mm, left-hand ___mm. <b>Ordering details:</b>		

## Technical Data

<p><b>Product:</b> Profiles made of galvanized steel, double-skinned</p> <ul style="list-style-type: none"> <li>• <b>Heat insulation:</b> U-value tested in acc. with EN ISO 12567-1 (for dim. = 4000 x 4000 mm) U W/m²k (complete door): 3,5 W/m²k</li> <li>• <b>Sound insulation:</b> RW (tested) 20 dB</li> <li>• <b>Air permeability:</b> classification in acc. with EN 12426 class: 0</li> <li>• <b>Resistance to wind load (R<sub>twl</sub>):</b> classification in acc. with EN 12424 class: 2</li> <li>• <b>Resistance to water penetration:</b> Tested in acc. with EN 12489, classification in acc. with EN 12425 class: 0</li> </ul> <p><b>Installation in:</b> Walls made of:</p> <ul style="list-style-type: none"> <li>• masonry mind. 120 mm</li> <li>• concrete mind. 150 mm</li> <li>• steel</li> <li>• autoclaved aerated concrete mind. 200 mm only with steel frame</li> <li>• wood mind. 240 mm</li> </ul> <p><b>Dimensions:</b> Ordering dimensions width: 1,000 – 11,500 mm height: 1,000 – 12,000 mm Roller shutters up to <b>15,000 mm width</b> (R<sub>twl</sub>. class: 2) and up to <b>18,000 mm width</b> (R<sub>twl</sub>. class: 1) available on request!</p> <p><b>Door curtain:</b> Door curtain, consisting of hinge-like interconnected galvanized steel.</p> <p><b>Profiles:</b> • double-skinned steel, 93,7 mm wide</p> <p><b>Oberfläche:</b> • galvanized steel. • coil-coated steel</p> <p><b>Glazing</b> • ThermoTeck synthetic glazing, crystal clear approx.. 150 mm x 55 mm.</p> <p><b>Bottom seals:</b> Double-skinned box profile made of aluminium with permanently elastic and frost-proof EPDM profile hose seal for a sealed bottom door edge.</p> <p><b>End caps:</b> Robust, wear and corrosion-free plastic parts for fixing the profiles.</p> <p><b>Wind hooks:</b> For high wind loads and/or large widths the doors are equipped with wind hooks and a reinforced bottom seal.</p> <p><b>Guide rails:</b> Robust, steel profiles with wear-proof, easy-to-change plastic guides.</p> <p><b>Winding shaft:</b> Prime coated steel tube with welded-in shafts on both sides for drive, anti-drop or bearing seat.</p>	<p><b>Header seal:</b> As standard on the outside for doors with ventilation grilles, louvers or other types of vent..</p> <p><b>Consoles:</b> Made of galvanized steel. If desired, with sound insulation in acc. with DIN 4109</p> <p><b>Locking:</b> All locks connected to door control unit via safety Switches. • Bottom seal can be locked from the inside via two locking rods. • Bottom seal can be locked from the in- and Outside via two locking rods. • Night latch on the inside (padlock) • Other types of locking mechanism on request.</p> <p><b>Drives:</b> Direct mount drive with integrated anti-drop device Or chain drive with separate anti-drop device and electric forced disconnection, (three-phase volt.) 400V, 50Hz, 60%ED, degree of protection IP54, with emergency crank handle (TÜV tested and maintenance-free). Other special voltages, degrees of protection, or types of emergency operation available on request.</p> <p><b>Controls:</b> For direct mount and chain drives, fully wired ready for use and with CEE plug. Basic version can be locked and used as a deadman control, can be easily retrofitted with: • Self-locking "CLOSE" in con. with safety edge • Radio control • Auto. closing (with traffic lights) Accessories for control units • Traffic light control/two way traffic • Digital induction loop. Without safety edge mechanism: Basic version 24V control voltage (safety low volt.) Degree of protect. IP65, "Door closed" in deadman mode (permanent pressure), push buttons "open-stop-close" With safety edge mechanism: With self-monitoring, electro-mechanical safety edge mechanism, safety-low voltage 24V, IP 65, "Door closed" and "Door open" in self-locking mode with push buttons "Open-Stop-Close".</p> <p><b>Special equipment:</b> Permanent side part with integrated door. Pivoted side part with integrated door.. Curtain box made of: • galvanized sheet steel • natural aluminium • Other versions on request Sloping bottom profile, aligned to the floor. Side or roof installation.</p>
--	---

# Roller Shutters Thermo Teck

For a detailed overview of installation variants see Installation data for roller shutters and roller grilles.



**Further documents:** The exact dimensions for the lateral buffers and the header buffer can be found in our installation data for roller shutters and roller grilles. It contains individually dimensioned assembly drawings for each door. Please contact us for special types of handling.